

YEAR

2013

LINK CONTAINER PORT RD S (from N/O PMH INT to S/O PMH INT)

COVERAGE (B) STATION

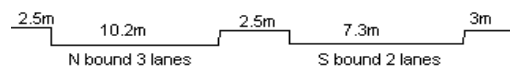
6214

ROAD NETWORK

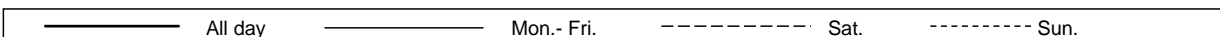
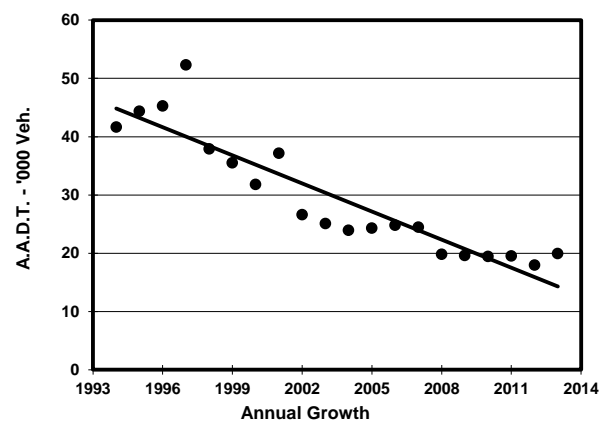
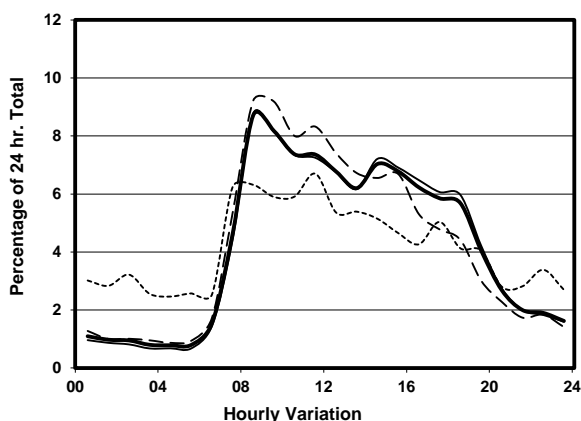
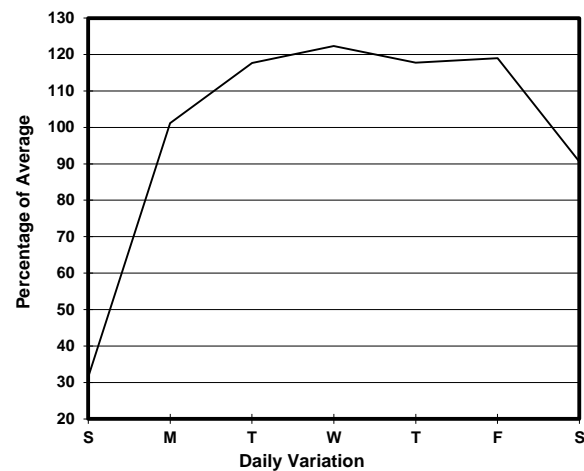
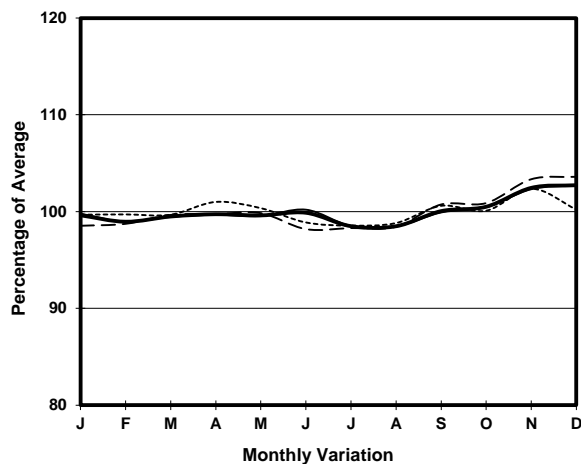
MAJOR

ROAD TYPE

LOCAL DISTRIBUTOR



1. TRAFFIC FLOW VARIATION AND GROWTH



2. TRAFFIC CHARACTERISTICS (BY DIRECTION)

Parameter	All - Day	Mon. - Fri.	Sat.	Sun.
SOUTH BOUND				
A.A.D.T.	9340	11300	8580	2880
R 12 / 24 - %	81.2	81.9	82.3	64.9
R 16 / 24 - %	91.7	92.6	90.5	77.4
AM Peak Hour	0800-0900	0800-0900	0900-1000	0700-0800
One-way flow at AM peak hour	750	910	780	190
T - % (AM)	-	41.7	-	-
PM Peak Hour	1600-1700	1600-1700	1600-1700	1700-1800
One-way flow at PM peak hour	610	770	470	160
T - % (PM)	-	53.1	-	-
Prop.of commercial vehicles - 16 hr.	-	50	-	-
NORTH BOUND				
A.A.D.T.	10600	12670	10200	3630
R 12 / 24 - %	80.4	81.1	81.6	65.1
R 16 / 24 - %	91.2	92	91.1	78.7
AM Peak Hour	0800-0900	0800-0900	0800-0900	0800-0900
One-way flow at AM peak hour	990	1200	980	220
T - % (AM)	-	31.5	-	-
PM Peak Hour	1600-1700	1600-1700	1600-1700	1700-1800
One-way flow at PM peak hour	630	780	530	170
T - % (PM)	-	63.3	-	-
Prop.of commercial vehicles - 16 hr.	-	53	-	-

3. OTHER INFORMATION AND COMMENT

4. Vehicle classification and occupancy - Monday to Friday

Time		Class of vehicle									
		Motor Cycle	Private Car	Taxi	Private LB	PLB	Goods veh.		Non Fr. Bus	Fr. Bus	
							Light	M & H		SD	DD
0700-0800	Pro	3.6	3.0	18.5	0.0	2.4	23.6	46.0	3.0	0.0	0.0
	Ocp	1.0	1.7	1.7	0.0	11.0	1.4	1.2	17.2	0.0	0.0
0800-0900 Peak hour	Pro	1.2	14.3	19.2	0.2	1.2	27.9	33.7	2.3	0.0	0.0
	Ocp	1.2	1.3	1.8	2.0	9.8	1.5	1.2	20.6	0.0	0.0
0900-1000	Pro	1.9	8.2	13.8	0.2	0.4	27.0	47.9	0.4	0.0	0.0
	Ocp	1.0	1.2	1.6	1.0	14.5	1.4	1.3	11.5	0.0	0.0
1000-1100	Pro	2.2	4.8	4.1	0.5	1.0	32.8	54.1	0.7	0.0	0.0
	Ocp	1.0	1.8	1.8	1.5	4.8	1.3	1.2	1.3	0.0	0.0
1100-1200	Pro	0.8	10.0	3.2	0.3	1.1	28.3	56.4	0.0	0.0	0.0
	Ocp	1.0	1.5	1.8	5.0	6.0	1.5	1.2	0.0	0.0	0.0
1200-1300	Pro	0.6	10.6	8.6	0.0	0.9	24.6	54.2	0.6	0.0	0.0
	Ocp	1.0	1.5	2.2	0.0	4.0	1.4	1.2	1.0	0.0	0.0
1300-1400	Pro	0.5	8.6	4.5	0.3	0.8	29.1	56.0	0.3	0.0	0.0
	Ocp	1.0	1.3	1.7	7.0	7.3	1.4	1.3	1.0	0.0	0.0
1400-1500	Pro	2.0	6.3	2.8	0.5	1.0	33.4	53.9	0.0	0.0	0.0
	Ocp	1.0	1.5	1.8	1.0	7.8	1.5	1.3	0.0	0.0	0.0
1500-1600	Pro	1.5	11.4	5.3	0.3	0.3	27.6	53.4	0.3	0.0	0.0
	Ocp	1.0	1.5	2.1	4.0	4.0	1.4	1.3	4.0	0.0	0.0
1600-1700	Pro	0.8	7.9	4.9	0.0	0.8	28.0	57.3	0.3	0.0	0.0
	Ocp	1.0	1.2	1.9	0.0	7.0	1.4	1.2	5.0	0.0	0.0
1700-1800	Pro	3.8	9.6	7.5	0.3	1.4	19.5	55.3	2.7	0.0	0.0
	Ocp	1.0	1.4	1.6	2.0	7.3	1.2	1.1	22.0	0.0	0.0
1800-1900	Pro	2.1	24.9	9.8	0.0	0.9	14.2	45.1	3.0	0.0	0.0
	Ocp	1.1	1.5	2.0	0.0	17.0	1.4	1.2	24.3	0.0	0.0
1900-2000	Pro	4.2	18.6	16.1	0.0	1.3	10.6	46.6	2.5	0.0	0.0
	Ocp	1.1	1.5	2.1	0.0	11.0	1.6	1.2	11.3	0.0	0.0
2000-2100	Pro	3.1	14.4	23.2	0.0	1.5	9.3	46.9	1.5	0.0	0.0
	Ocp	1.0	2.0	2.0	0.0	6.7	1.5	1.2	1.0	0.0	0.0
2100-2200	Pro	2.4	9.5	20.6	0.0	1.6	9.5	54.8	1.6	0.0	0.0
	Ocp	1.0	1.4	1.6	0.0	9.5	1.4	1.2	1.0	0.0	0.0
2200-2300	Pro	1.0	15.2	26.3	1.0	0.0	7.1	47.5	2.0	0.0	0.0
	Ocp	1.0	1.5	1.7	1.0	0.0	1.0	1.2	24.0	0.0	0.0
16 hours	Pro	1.9	10.6	10.2	0.2	1.0	24.6	50.4	1.2	0.0	0.0
	Ocp	1.0	1.4	1.8	2.5	8.7	1.4	1.2	15.8	0.0	0.0

Legend

Pro. Proportion of vehicles in % (Sum may not add up to 100% due to figure rounding)
Ocp. Average occupancy of vehicles
M&H Medium and Heavy